

**MEETING ROOM CAPACITIES**

EXHIBIT HALLS	Sq. Feet	Banquet	Theater	Classroom
A+B+C+D	100,000	5,490	9,470	5,436
Exhibit Hall A	28,195	1,680	2,880	1,638
Exhibit Hall B	29,304	1,620	2,728	1,638
Exhibit Hall C	28,902	1,590	2,698	1,584
Exhibit Hall D	13,616	600	1,164	576
Halls A+B	57,499	3,300	5,608	3,267
Halls A+B+C	86,401	4,890	8,306	4,860
Halls C+D	42,518	2,190	3,862	2,160

**BALLROOMS**

A+B+C+D+E	20,000	1,400	2,325	1,404
Ballroom A	10,000	680	1,175	756
Ballroom B	3,700	210	414	234
Ballroom C	1,350	80	120	54
Ballroom D	3,700	210	414	234
Ballroom E	1,350	80	120	54

**MEETING ROOMS**

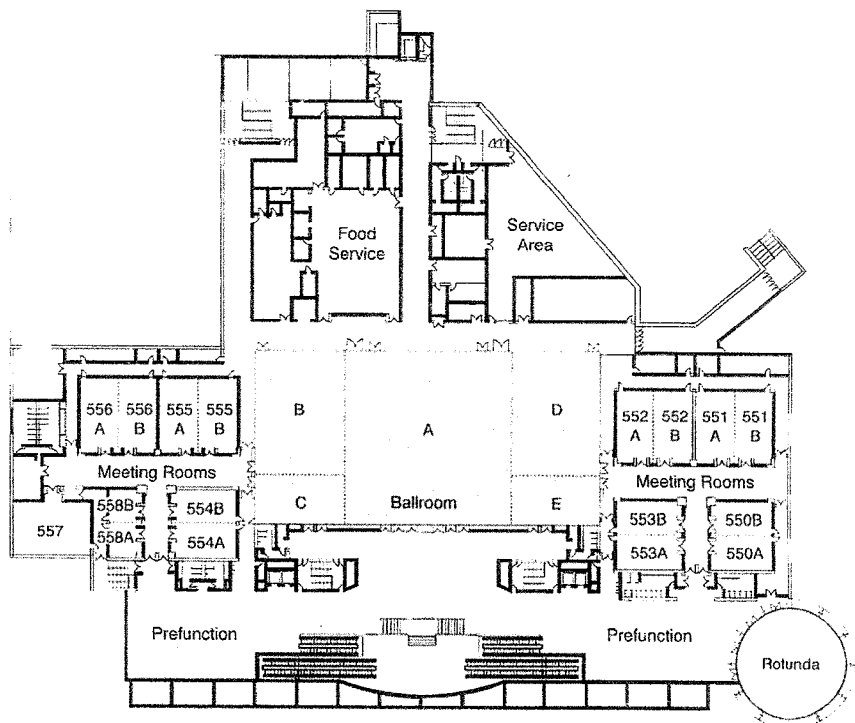
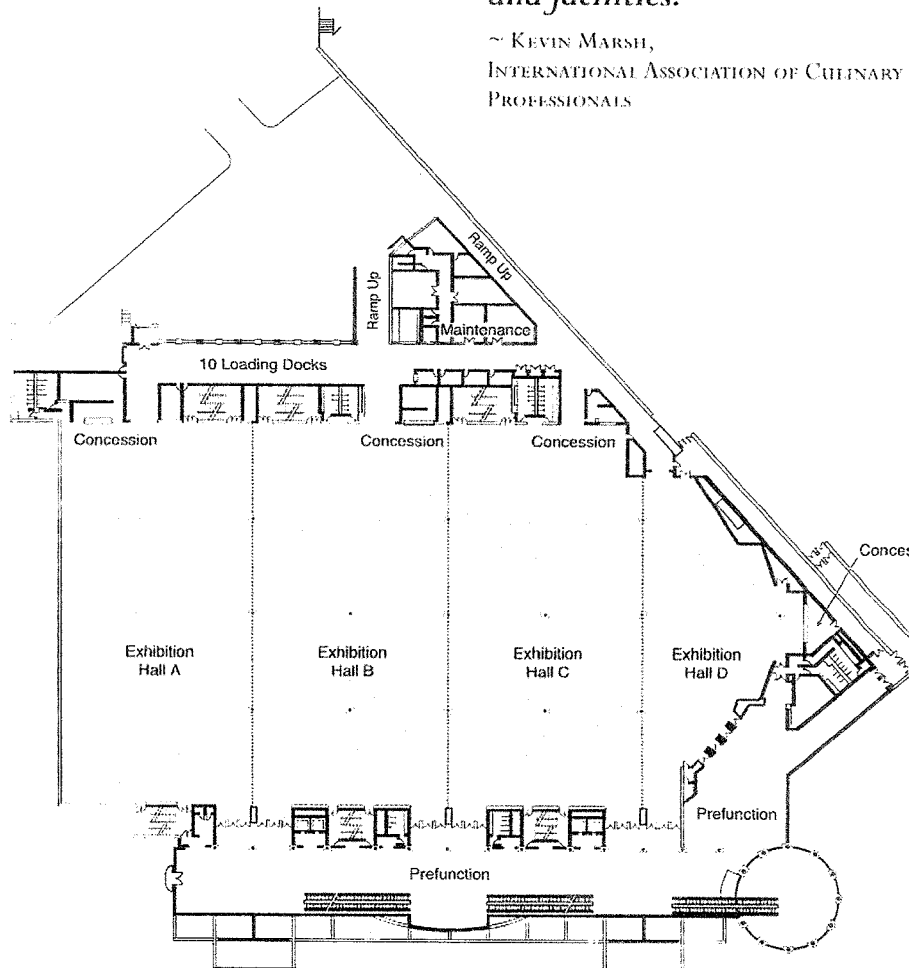
550 A/B	1,178	60	110	42
551 A/B	1,936	120	180	126
552 A/B	2,024	120	198	126
553 A/B	1,444	90	140	84
554 A/B	1,672	90	180	105
555 A/B	2,024	120	198	126
556 A/B	1,980	120	180	126
557	1,350	100	143	72
558 A/B	608	30	45	42
Rotunda	2,552	160	212	126

**SPECIAL FEATURES**

- EXHIBIT FLOOR: EQUIPPED WITH ELECTRICITY, TELEPHONE, COMPUTER, COMPRESSED AIR, WATER, AND DRAINS.
- MEETING ROOMS AND BALLROOM: EQUIPPED FOR A FULL ARRAY OF AUDIO/VISUAL SERVICES.

*"I was overwhelmed by the volume of positive comments I received. It is important to not they were made by well-travel professionals and who recognize exceptional hospitality, service and facilities."*

~ KEVIN MARSH,  
INTERNATIONAL ASSOCIATION OF CULINARY PROFESSIONALS



*"Congratulations!  
And an extra hurrah for making the Philharmonic's major fundraising event such a success. All of our guests thoroughly enjoyed the evening and are still talking about it today. Bravo! What can I say but THANKYOU!"*

~ PAMELA CASSIDY  
RHODE ISLAND PHILHARMONIC